

INSTALLATION INSTRUCTIONS

HYMAX[®]2

ELBOW 45° AND 90° (2" - 12")

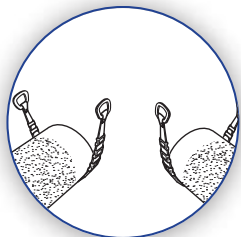


DO NOT DISASSEMBLE THE COUPLING. DO NOT LUBRICATE THE BOLTS. DO NOT TEAR THE GASKET - SEE INSTRUCTIONS.

GENERAL INSTRUCTIONS:

THE HYMAX2 ELBOW IS A STAB TYPE COUPLING.

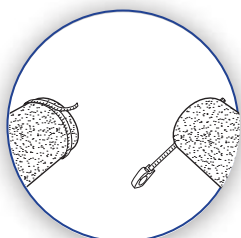
STEP 1



Prepare both pipe ends by descaling if required. Clean the pipes as required using water. Make sure that the pipe is clear from debris and defects that may interfere with the HYMAX Elbow's proper seal.

NOTE: Except steel, PVC, and PE pipes, all rough-surfaced pipes must be lubricated with a water-based gasket lubricant in order to achieve a proper seal.

STEP 2



Measure both pipes' outer diameters and make sure the Elbow's size will fit the pipes properly on both sides.

NOTE: Each coupling's size range is shown on the product's label. Ensure that the pipes are not out of round and free of scratches, dents, flats or other defects which may interfere with the Elbow's proper seal. The Elbow may not fit well or function properly on pipe which is out of round or damaged.

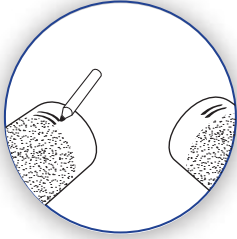
STEP 3

Unpack the HYMAX2 Elbow. Carefully remove the HYMAX2 Elbow from its packaging. Inspect the HYMAX2 Elbow, if the end rings are not centered on the coupling do not use! Contact your distributor for return and replacement!

NOTE: The HYMAX2 Elbow is a stab on coupling. Do not remove the end ring bolts.

NOTE: Bolts are pre-lubricated with a MAG (Molecular Anti Galling) dry coating. Do not lubricate the bolts and nuts. Greasing or lubricating bolts or nuts voids manufacturer's warranty.

STEP 4



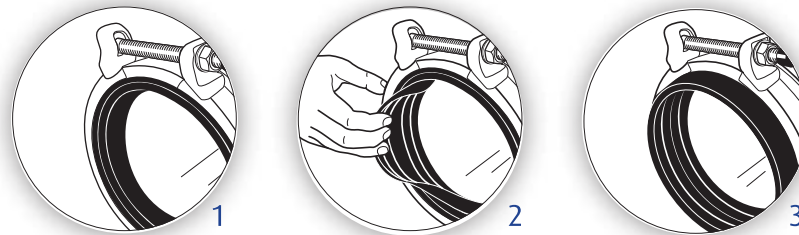
Make 2 markings on the pipe - one for the closed position of the gasket and one for the open (flip) position. The mark for minimum stab depth which is closer to the product is at a distance of 2.25" from the edge, the mark further away at 3.25", which is for the open gasket position.

STEP 5

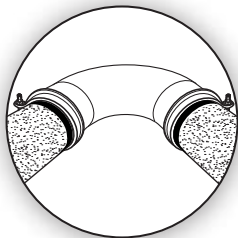
The HYMAX 2's gasket system has two positions - A closed gasket position and an open gasket position. The open position is used to accommodate larger OD pipes within the working range. If a larger OD pipe is used, hold the gasket with your fingers and unfold it to an open position. Look for the working range on the product label to determine if the product range is within the higher or the lower range.

NOTE: Measure the OD of the pipe TWICE using an OD tape!

NOTE: Do not tear the gasket.



STEP 6



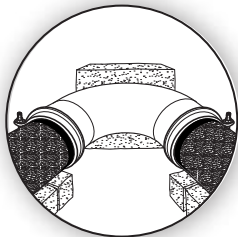
Position the elbow for installation. Place the elbow with top-facing bolts. Slide the coupling so that it covers the marks made in step 4. Make sure that the pipes are properly supported.

NOTE: The HYMAX2 Elbow does not offer restraint against longitudinal separation and is not designed to carry the weight of the pipes by itself. Therefore the use of pipe restraint and/or thrust blocks may be required.

For uncoated ductile iron, grey cast iron and asbestos cement pipe surfaces - appropriate water-based gasket lubricant is required on both gaskets inner surface and pipe's outer surface. Do not lubricate PVC, steel or any PE pipe surfaces.

DO NOT LUBRICATE BOLTS!

NOTE: HYMAX2 Elbow does not offer restraint against longitudinal separation and therefore the use of pipe restraint and/or thrust blocks may be required.



STEP 7


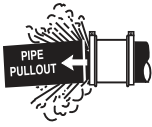




Tightening the end rings. Tighten the Elbow's bolts using a 3/4" socket wrench for 2"-3" couplings, a 7/8" socket wrench for 4"-12" couplings. Tighten the bolts evenly on each end ring in an alternating pattern to the torque mentioned on the label. Cross-tightening ensures that the gasket is evenly seated. When you finish, re-check the torque again. **DO NOT LUBRICATE BOLTS !**

NOTE: Use of a torque wrench is required! The torque wrench will verify that the proper torque has been achieved. Refer to the product label for the proper torque settings.

STEP 8

Recharge the line and check for leaks. If any leakage is evident, reduce the pressure in the line and increase bolt's torque up to 50%. Verify again there are no leaks along the seal.

 WARNING 	This product does not restrain axial pipe movement. Proper anchorage of the pipe is required if this product is used as a coupling. Failure to anchor the pipe ends could result in the escape of line content, and may cause property damage, serious injury or death.
 WARNING 	Caution: This product is not intended for use on natural gas piping, or any other type of gas piping. To do so could result in escaping gas that could ignite and cause property damage, serious injury or death.

HYMAX[®]

Repair the past. Connect the future.

 **KRAUSZ** is the creator of HYMAX

331 SW 57TH AVENUE, OCALA, FLORIDA 34474

TEL: 855-457-2879 | 855-4KRAUSZ

FAX: 352-304-5787

info@krauszusa.com | www.krauszusa.com