

# HYMAX<sup>®</sup>

Repair the past. Connect the future.

## HLD - HYMAX LARGE DIAMETER



### LARGE DIAMETER COUPLING SOLUTIONS 14" - 60" CONNECTING THE FUTURE.

- \* Only 4 top-facing bolts in products up to 60" - for faster, easier and safer installation
- \* Wide-range products- always the right product on hand
- \* Minimum time in the ditch
- \* Dynamic deflection feature reduces the risk of future pipe breaks and continuous repairs
- \* Cost-saving- less inventory
- \* Patented products, field-proven in over million installations worldwide

\* This product is protected under a registered patent. See Krausz website for details.



JOIN



REPAIR



RESTRAIN

**KRAUSZ** is the creator of HYMAX

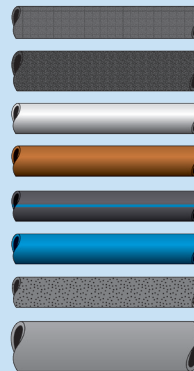
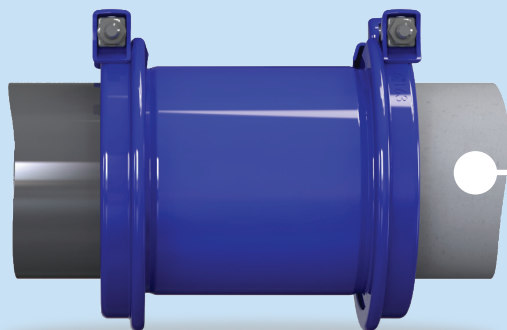
# THE HYMAX<sup>®</sup>



Picture is based on HYMAX 14"-60" - features may vary between different product sizes



# FAMILY



Ductile Iron

Cast Iron

Steel

Copper

PE

PVC

Asbestos Cement

GRP



## HYMAX LARGE DIAMETER COUPLING

HYMAX Large Diameter Coupling, used for section replacement, connects two pipes of the same or different OD pipe diameters and materials, up to 2.1" range.

Krausz Part Number	ND (inch)	Overall Range (inch)	Before Removing the Inner Layer (inch)	After Removing the Inner Layer (inch)	Working Pressure (PSI)	Rated Pressure (PSI)
860-56-0378-16P	14	15.00 - 17.10	15.00 - 16.10	16.02 - 17.10	260	390
860-56-0434-16P	16	17.10 - 19.20	17.10 - 18.19	18.11 - 19.20	260	390
860-56-0488-16P	18	19.20 - 21.30	19.20 - 20.29	20.21 - 21.30	232	350
860-56-0497-16P	20	19.60 - 21.70	19.60 - 20.69	20.61 - 21.70	232	350
860-56-0540-16P	20	21.25 - 23.35	21.25 - 22.35	22.27 - 23.35	232	350
860-56-0606-16P	24	23.85 - 25.95	23.85 - 24.96	24.88 - 25.95	232	350
860-56-0624-16P	24	24.60 - 26.70	24.60 - 25.67	25.59 - 26.70	232	350



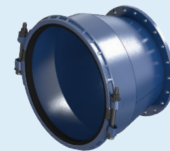
Nominal Pipe Size 14" - 60"  
(26" - 60" - Made to Order)

## HYMAX FLANGE ADAPTOR LARGE DIAMETER

HYMAX FLANGE ADAPTOR LARGE DIAMETER

HYMAX Flange Adaptor Large Diameter Coupling connects any flanged device, such as valves, pumps and other devices, with a variety of pipe diameters and materials, up to 2.1" range.

Krausz Part Number	ND (inch)	Flange (inch)	Overall Range (inch)	Before Removing the Inner Layer (inch)	After Removing the Inner Layer (inch)	Working Pressure (PSI)	Rated Pressure (PSI)
874-56-14037812	14	14	15.00 - 17.10	15.00 - 16.10	16.02 - 17.10	175	262
874-56-16043412	16	16	17.10 - 19.20	17.10 - 18.19	18.11 - 19.20	175	262
874-56-18048812	18	18	19.20 - 21.30	19.20 - 20.29	20.21 - 21.30	175	262
874-56-20054012	20	20	21.25 - 23.35	21.25 - 22.35	22.27 - 23.35	175	262
874-56-24060612	24	24	23.85 - 25.95	23.85 - 24.96	24.88 - 25.95	175	262
874-56-24062412	24	24	24.60 - 26.70	24.60 - 25.67	25.59 - 26.70	175	262



Nominal Pipe Size 14" - 60"  
(26" - 60" - Made to Order)

## HYMAX LARGE DIAMETER LONG BODY

HYMAX LARGE DIAMETER AND LONG BODY, used for pipe section replacement, connects two pipes of the same or different OD pipe and materials, covering a wider gap between the pipes, with up to up to 2.1" range.

Long couplings are typically used when there is uncertainty regarding the gap between the pipes.

Krausz Part Number	ND (inch)	Overall Range (inch)	Before Removing the Inner Layer (inch)	After Removing the Inner Layer (inch)	Working Pressure (PSI)	Rated Pressure (PSI)
862-56-0378-16P	14	15.00 - 17.10	15.00 - 16.10	16.02 - 17.10	260	390
862-56-0434-16P	16	17.10 - 19.20	17.10 - 18.19	18.11 - 19.20	260	390
862-56-0488-16P	18	19.20 - 21.30	19.20 - 20.29	20.21 - 21.30	232	350
862-56-0497-16P	20	19.60 - 21.70	19.60 - 20.69	20.61 - 21.70	232	350
862-56-0540-16P	20	21.25 - 23.35	21.25 - 22.35	22.27 - 23.35	232	350
862-56-0606-16P	24	23.85 - 25.95	23.85 - 24.96	24.88 - 25.95	232	350
862-56-0624-16P	24	24.60 - 26.70	24.60 - 25.67	25.59 - 26.70	232	350



Nominal Pipe Size 14" - 60"  
(26" - 60" Made to Order)

## HYMAX ELBOW LARGE DIAMETER

Large Diameter HYMAX Elbow joins two pipes of the same or different diameters and materials, with an elbow of up to 90° angle.



Nominal Pipe Size 14" - 24"  
(Made to Order)



# SPECIFICATIONS

## HYMAX REDUCER LARGE DIAMETER

HYMAX Reducer Large Diameter joins pipes different nominal sizes and materials. Each side has a tolerance of up to 2.1", joining pipes made of a variety of materials.



Nominal Pipe Size 14" - 60"  
(26" - 60" Made to Order)

Krausz Part Number	ND (inch)	Overall Range (inch)	Before Removing the Inner Layer (inch)	After Removing the Inner Layer (inch)	Overall Range 2 (inch)	Before Removing the Inner Layer 2 (inch)	After Removing the Inner Layer 2 (inch)	Working Pressure (PSI)	Rated Pressure (PSI)
861560315035316	12 x 14	12.40 - 13.66	12.40 - 13.03	12.99 - 13.66	13.90 - 16.00	13.90 - 15.00	14.92 - 16.00	260	390
861560315037816	12 x 14	12.40 - 13.66	12.40 - 13.03	12.99 - 13.66	15.00 - 17.10	15.00 - 16.10	16.02 - 17.10	260	390
861560334037816	12 x 14	13.15 - 14.41	13.15 - 13.78	13.74 - 14.41	15.00 - 17.10	15.00 - 16.10	16.02 - 17.10	260	390
861560378043416	14 x 16	15.00 - 17.10	15.00 - 16.10	16.02 - 17.10	17.10 - 19.20	17.10 - 18.19	18.11 - 19.20	260	390
861560434048816	16 x 18	17.10 - 19.20	17.10 - 18.19	18.11 - 19.20	19.20 - 21.30	19.20 - 20.29	20.21 - 21.30	232	350
861560488054016	18 x 20	19.20 - 21.30	19.20 - 20.29	20.21 - 21.30	21.25 - 23.35	21.25 - 22.35	22.27 - 23.35	232	350
861560540060616	20 x 24	21.25 - 23.35	21.25 - 22.35	22.27 - 23.35	23.85 - 25.95	23.85 - 24.96	24.88 - 25.95	232	350
861560540062416	20 x 24	21.25 - 23.35	21.25 - 22.35	22.27 - 23.35	24.60 - 26.70	24.60 - 25.67	25.59 - 26.70	232	350

## HYMAX CATHODIC LARGE DIAMETER

Large diameter HYMAX Coupling with cathodic anti-corrosion protection feature connects two pipes of the same or different diameters and materials.

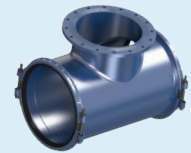
Krausz Part Number	ND (inch)	Overall Range (inch)	Before Removing the Inner Layer (inch)	After Removing the Inner Layer (inch)	Working Pressure (PSI)	Rated Pressure (PSI)
888-56-0378-16P	14	15.00 - 17.10	15.00 - 16.10	16.02 - 17.10	260	390
888-56-0434-16P	16	17.10 - 19.20	17.10 - 18.19	18.11 - 19.20	260	390
888-56-0488-16P	18	19.20 - 21.30	19.20 - 20.29	20.21 - 21.30	232	350
888-56-0497-16P	20	19.60 - 21.70	19.60 - 20.69	20.61 - 21.70	232	350
888-56-0540-16P	20	21.25 - 23.35	21.25 - 22.35	22.27 - 23.35	232	350
888-56-0606-16P	24	23.85 - 25.95	23.85 - 24.96	24.88 - 25.95	232	350
888-56-0624-16P	24	24.60 - 26.70	24.60 - 25.67	25.59 - 26.70	232	350



Nominal Pipe Size 14" - 24"  
(26" - 60" Made to Order)

## HYMAX FLANGE OUTLET/THREADED OUTLET LARGE DIAMETER

HYMAX Flange Outlet and Large Diameter provides effective outlet solutions for a wide variety of piping types and diameters, joining pipes made of the same or different materials, and with varying diameters of up to 2.1".

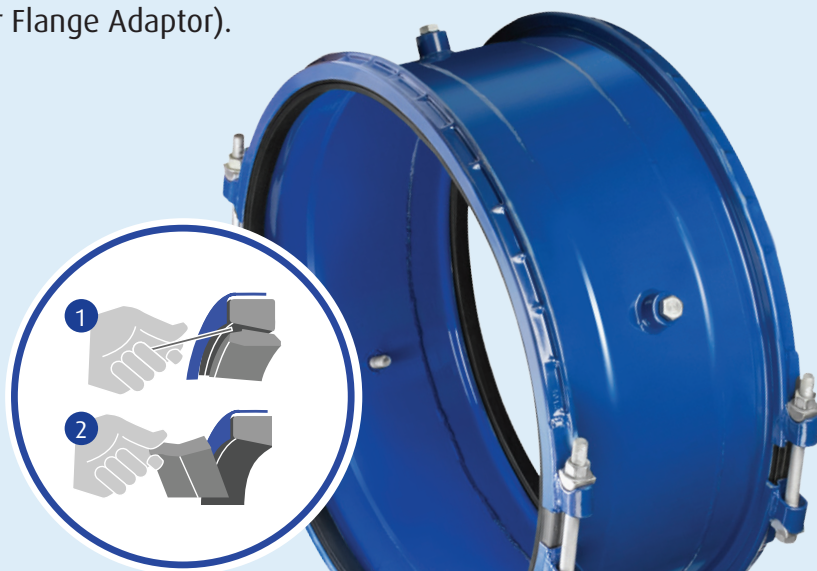


Nominal Pipe Size 14" - 60"  
Made to Order



## HYMAX® Product Information

1. HYMAX meets or exceeds all specifications of AWWA Standard C219, NSF-61 and NSF-372.
2. Center Ring:  
14" – 60": ASTM A283/A283M Grade C Steel.
3. End ring: ASTM A283/A283M Grade C Steel.
4. Gaskets: EPDM, available, are compounded for water and sewage, meet NSF-61 and NSF-372 standards for contact with drinking water.
5. Nuts and bolts: ANSI 304 Stainless Steel. Rolled thread and Molecular Anti Galling (MAG) treatment.
6. Bridge: ANSI 304 Stainless Steel.
7. Coating: 100% fusion bonded epoxy for enhanced corrosion protection. Average thickness 14 mil, meets NSF-61 and NSF-372 standards.
8. Deflection up to 4° per side (one side only for Flange Adaptor).
9. Working temperature:  
EPDM: -20°F up to +125°F



\* Data may vary according to product type and size. For product specification sheet please refer to our website: [www.krauszusa.com](http://www.krauszusa.com)

Two Layer Gasket allows adjusting to pipe diameter



# 90 YEARS OF INNOVATIVE PIPE JOIN AND REPAIR SOLUTIONS

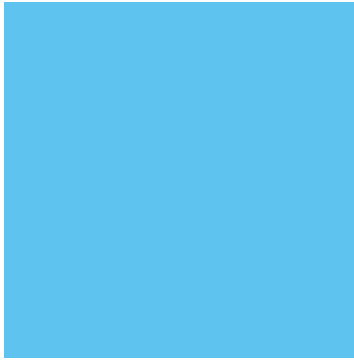


For 90 years, Krausz, the creator of HYMAX, has developed and manufactured market-leading products for the repair and connection of different pipe types in the potable water and sewage markets.

We have a solid reputation selling a wide variety of innovative, easy-to-use, durable products that save time and reduce inventory.







**KRAUSZ USA**  
**331 SW 57TH AVENUE, OCALA,**  
**FLORIDA 34474**  
**TEL: 855-457-2879 OR 855-4KRAUSZ**  
**FAX: 352-304-5787**

**INFO@KRAUSZUSA.COM**  
**WWW.KRAUSZUSA.COM**



**KRAUSZ** is the creator of HYMAX