

INSTALLATION INSTRUCTIONS

HYMAX[®]

Repair the past. Connect the future.

KRAUSZ is the creator of HYMAX

HYMAX CLAMP[®]

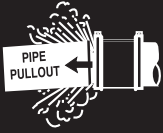
(1.5" - 26")

HYMAX Clamp[®]

HYMAX Clamp[®] Tapped Clamp



WARNING



THIS PRODUCT DOES NOT RESTRAIN AXIAL PIPE MOVEMENT. PROPER ANCHORAGE OF THE PIPE IS REQUIRED IF THIS PRODUCT IS USED AS A COUPLING. FAILURE TO ANCHOR THE PIPE ENDS COULD RESULT IN THE ESCAPE OF LINE CONTENT, AND MAY CAUSE PROPERTY DAMAGE, SERIOUS INJURY OR DEATH.



CAUTION: THIS PRODUCT IS NOT INTENDED FOR USE ON NATURAL GAS PIPING, OR ANY OTHER TYPE OF GAS PIPING. THIS COULD RESULT IN ESCAPING GAS THAT COULD IGNITE AND CAUSE PROPERTY DAMAGE, SERIOUS INJURY OR DEATH.



IMPORTANT

THE HYMAX CLAMP is a flat gasket repair clamp that repairs holes and longitudinal cracks along the pipe. Do not disassemble the product.

LUBRICATION OF HYMAX CLAMP. All pipes must be lubricated with a water-based gasket lubricant in order to achieve a proper seal.

DO NO LUBRICATE BOLTS AND NUTS. Bolts are pre-lubricated with a MAG (Molecular anti-galling) coating. Greasing bolts or nuts voids manufacturer's warranty.

USE TORQUE WRENCH TO TIGHTEN THE BOLTS. A torque wrench will assure a proper torque has been applied to the CLAMP. Do not use other tools to tighten the Clamp's bolts!

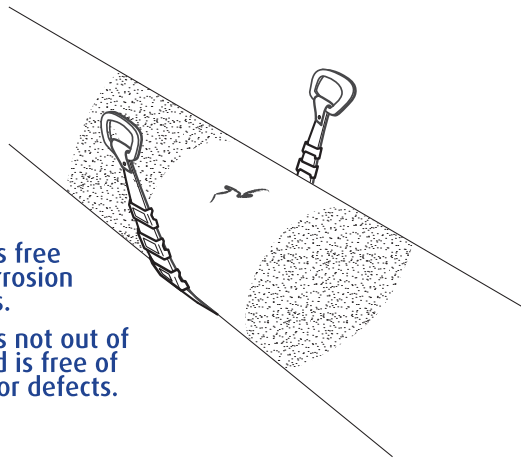
PREPARE PRODUCT AND PIPE FOR INSTALLATION:

1

CLEAN AND DESCALE THE PIPE

Make sure that:

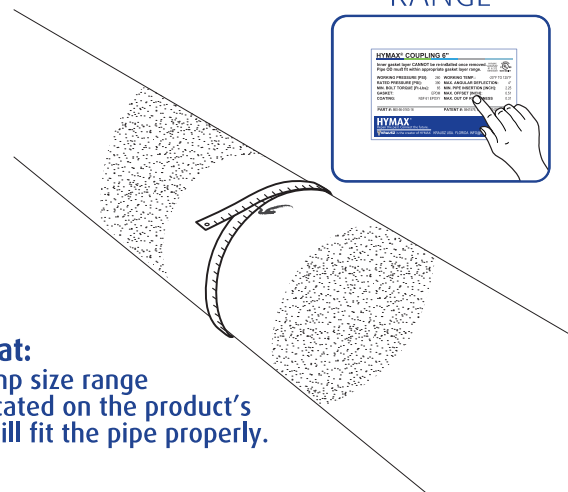
- The pipe is free of dirt, corrosion and debris.
- The pipe is not out of round, and is free of scratches or defects.



2

MEASURE THE PIPES' OD TWICE RANGE

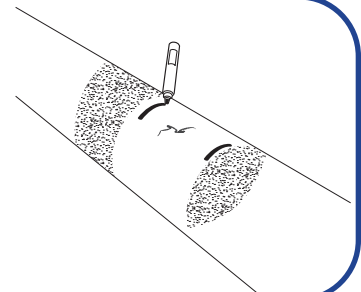
Make sure that: the Clamp size range (as indicated on the product's label) will fit the pipe properly.



3

MARK THE PIPE

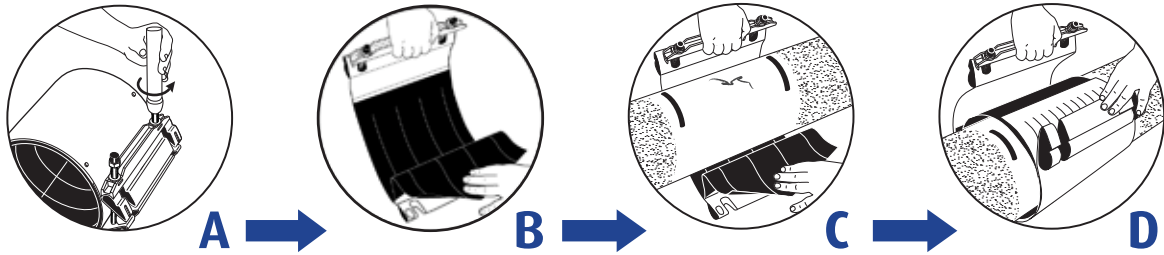
Mark the pipe an even distance from the break or leak, according to the length of the Clamp.



INSTALLATION OF THE CLAMP:

4

LOOSEN THE HYMAX CLAMP NUTS BUT DO NOT DISASSEMBLE COMPLETELY



- (A) Loosen the bolts.
- (B) Grasp the side compression beam, and unlatch it from the lug
- (C) Open up the clamp fully while positioning it over the leak
- (D) Wrap the HYMAX Clamp around the pipe

5

CENTER THE HYMAX CLAMP OVER THE INSTALLATION AREA

Fully wrap the clamp around the pipe.

Once the HYMAX Clamp is positioned around the pipe, re-engage the side compression beam over the lug assembly by pushing it downward until it clicks in place ONCE - see Click 1 in step 6.

After the first click you can still slide the HYMAX Clamp over the pipe to its final position.

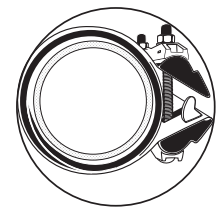
Make sure that the tapered end of the gasket is on the surface of the pipe and is smoothly positioned in place.

6

FINAL LOCATION OF PRODUCT



CLICK 1



CLICK 2

Push down the side compression beam over the lug assembly to its second final position to create a 2nd click.

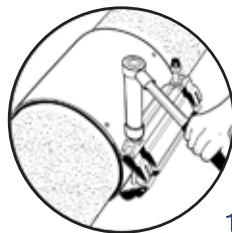
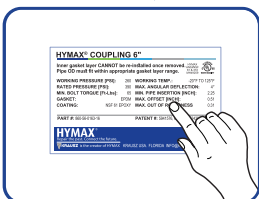
Note: Make sure you hear 2 clicks!

7

TIGHTEN

Tighten all nuts, working from the center of the lug outward. Re-check that proper torque has been reached (drawing 1) as specified on the product label. Make sure the alignment teeth are fully engaged in the slots on the opposite lug (drawing 2).

TORQUE



1



2

8

RECHARGE

Recharge the line and check for leaks. If any leakage is evident, reduce the pressure in the line and increase bolt torque up to 20%. Verify again there are no leaks along with the seal.

HYMAX[®]

Repair the past. Connect the future.

 **KRAUSZ** is the creator of HYMAX