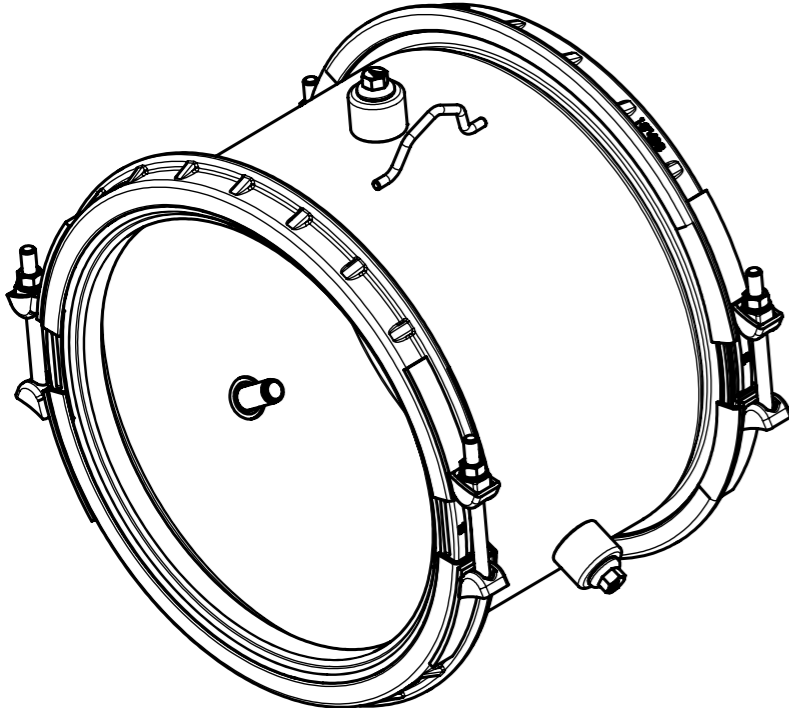
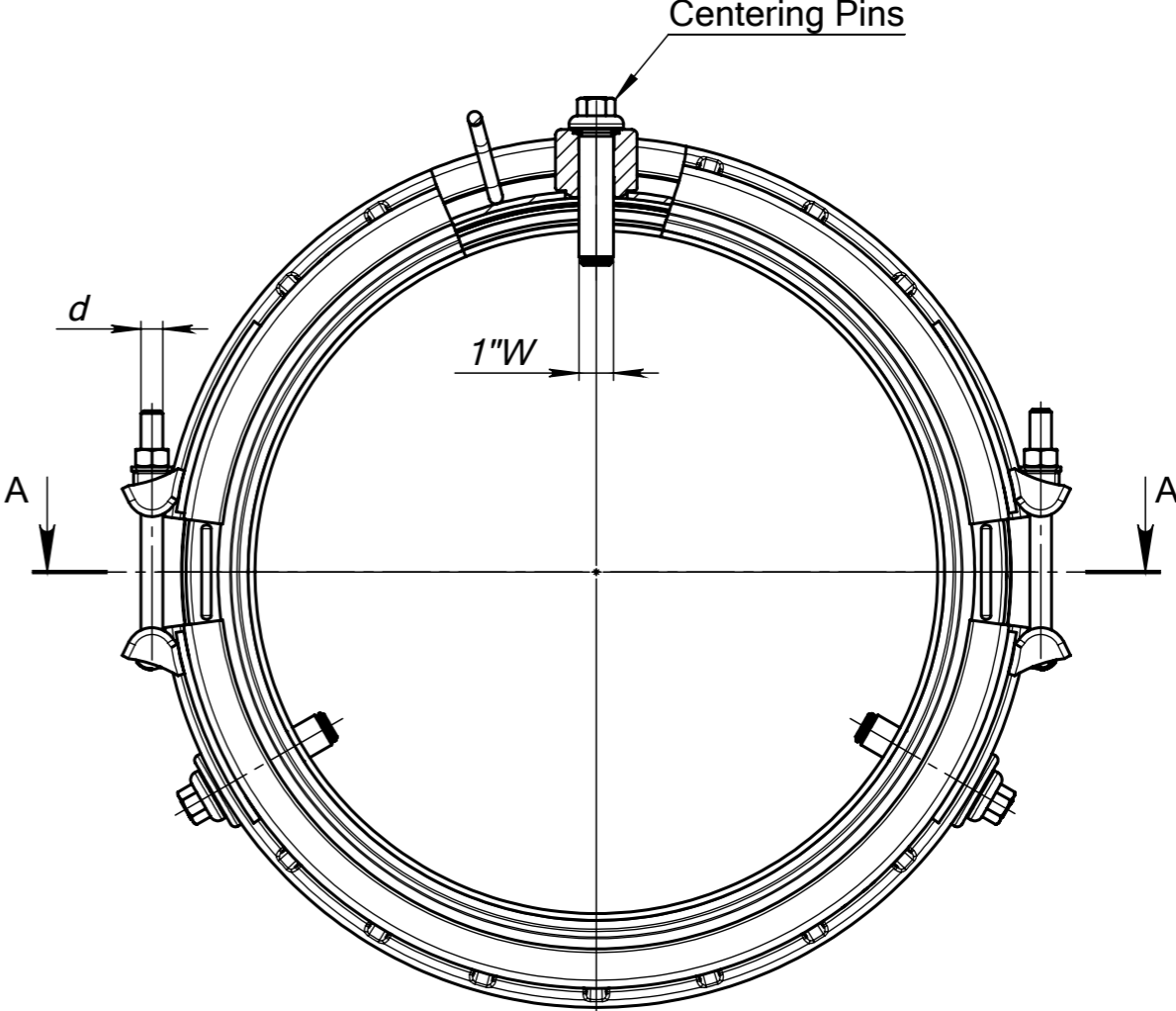
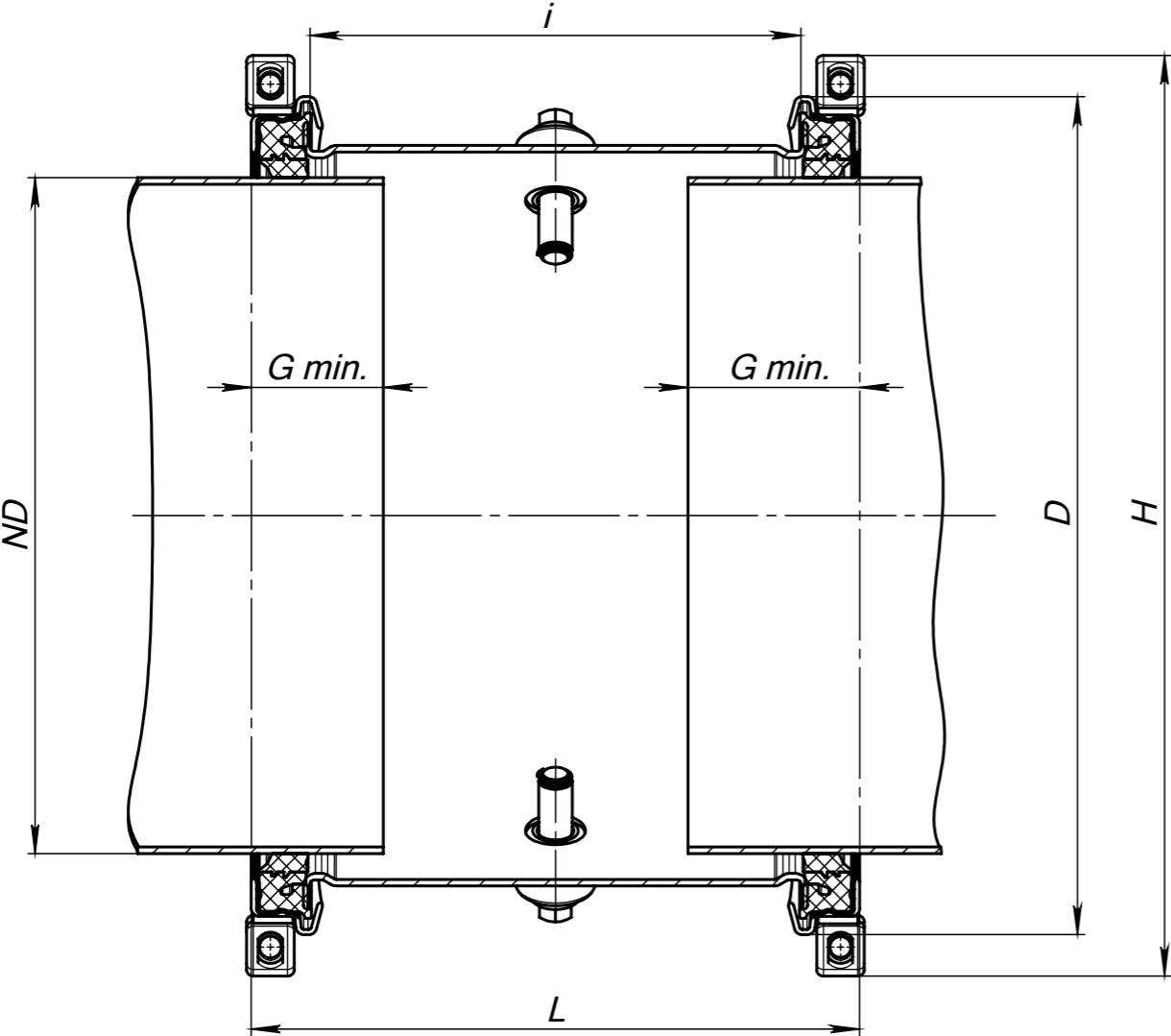

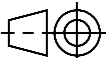


REVISIONS					
REV.	DESCRIPTION	ECO	DRAWN	APPROVED	DATE
C	Change material information	20000145	Noam S.	Tzah Gr.	27/10/2020

SECTION A-A  
ROTATED



Weight: See Table			Part Name: HYMAX 2 LONG 14"-24" FLIP EPDM		Scale
	Date	Name	Catalog No. SD862-54-02		DO NOT SCALE DRAWING
Design	27.10.19	Noam S.			
Check	04/11/2019	Noam S.	Drawing No. SD862-54-02		Sheet 1 of 2
Appr.	04/11/2019	Tzah Gr.			
 KRAUSZ			Confidential Information. All rights reserved to Krausz Industries Ltd. This document may not be copied, reproduced, displayed, modified or used in any way, whether in whole or in part, without the express prior written consent of Krausz Industries Ltd.		 Size A3

RELEASED


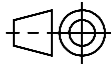
REVISIONS					
REV.	DESCRIPTION	ECO	DRAWN	APPROVED	DATE
C	Change material information	20000145	Noam S.	Tzah Gr.	27/10/2020

Krausz Part Number	ND	Overall Range (inch)	Range Before Flipping Gasket (inch)	Range After Flipping Gasket (inch)	D (inch)	H (inch)	i (inch)	L (inch)	Bolts Qty.-Size d (mm)	Torque (Ft-Lbs)	Approx. Weight (Lbs)
862-54-0378-16P	14"	15.00-17.10	15.00-16.10	16.02-17.10	Ø21.0	23.2	14.6	18.0	4 -M16	150	107
862-54-0434-16P	16"	17.10-19.20	17.10-18.19	18.11-19.20	Ø23.2	25.6	14.6	18.0	4 -M16	150	123
862-54-0488-16P	18"	19.20-21.30	19.20-20.29	20.21-21.30	Ø25.3	27.8	14.6	18.0	4 -M16	150	132
862-54-0497-16P	20"	19.60-21.70	19.60-20.69	20.61-21.70	Ø25.6	28.1	14.6	18.0	4 -M16	150	136
862-54-0540-16P	20"	21.25-23.35	21.25-22.35	22.27-23.35	Ø27.3	29.8	14.6	18.0	4 -M16	150	141
862-54-0606-16P	24"	23.85-25.95	23.85-24.96	24.88-25.95	Ø29.1	31.7	14.6	18.0	4 -M16	150	158
862-54-0624-16P	24"	24.60-26.70	24.60-25.67	25.59-26.70	Ø30.6	33.2	14.6	18.0	4 -M16	150	163

#### Material information:

- △**B** 1) HYMAX conforms with or exceeds requirements of standards: NSF-61 and NSF-372.
- 2) Center Ring :  
ASTM A 283 / A 283M Grade C Steel.
- 3) End Rings:  
14"-16" - ASTM A 283 / A 283M Grade C Steel.  
(or Ductile Iron Casting ASTM A536 grade 65-45-12) △**B**  
18"-24" - ASTM A 283 / A 283M Grade C Steel.
- △**C** 4) Gaskets - EPDM compounded for water and sewerage in accordance with ASTM D2000  
Working Temperature:  
for continuous operations: -20°F up to +180°F.  
for short time operations: up to +215°F.
- 5) Bolts, Nuts and Washers - AISI 304 stainless steel.  
Rolled thread and anti galling coating.
- 6) Spherical Spacers - AISI 304 stainless steel.
- 7) Bridge - AISI 304 stainless steel.
- 8) Coating - 100% Fusion bonded epoxy  
for enhanced corrosion protection.  
Average thickness 14 Mil.  
Working Temperature:  
above ground applications: up to +125°F.  
under ground applications: up to +150°F.

Product performance		
Dynamic deflection per side		up to 4°
G - Min. pipe Insertion		5.5"
Maximum offset for misaligned pipe		0.51"
Maximum out of roundness		0.51"
Working Pressure	ND 14"-16"	260 PSI
	ND 18"-24"	232 PSI
Rated Pressure	ND 14"-16"	390 PSI
	ND 18"-24"	350 PSI
Vacuum Test		12 PSI

Weight: See Table			Part Name: HYMAX 2 LONG 14"-24" FLIP EPDM		Scale
	Date	Name	Catalog No. SD862-54-02		DO NOT SCALE DRAWING
Design	27.10.19	Noam S.			
Check	04/11/2019	Noam S.	Drawing No. SD862-54-02		Sheet
Appr.	04/11/2019	Tzah Gr.			2 of 2
 Confidential Information. All rights reserved to Krausz Industries Ltd. This document may not be copied, reproduced, displayed, modified or used in any way, whether in whole or in part, without the express prior written consent of Krausz Industries Ltd.					Size A3

RELEASED