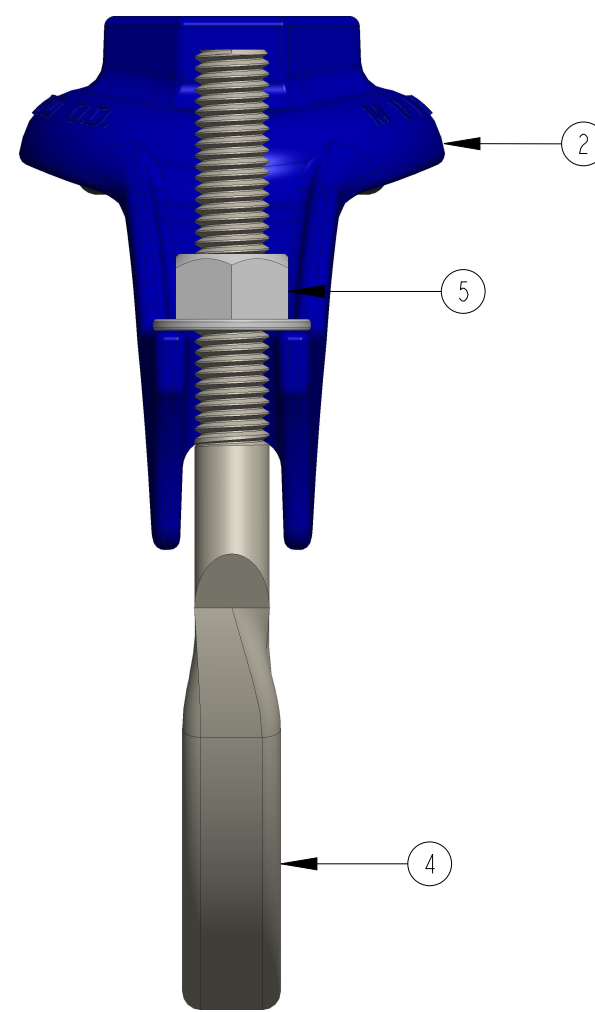
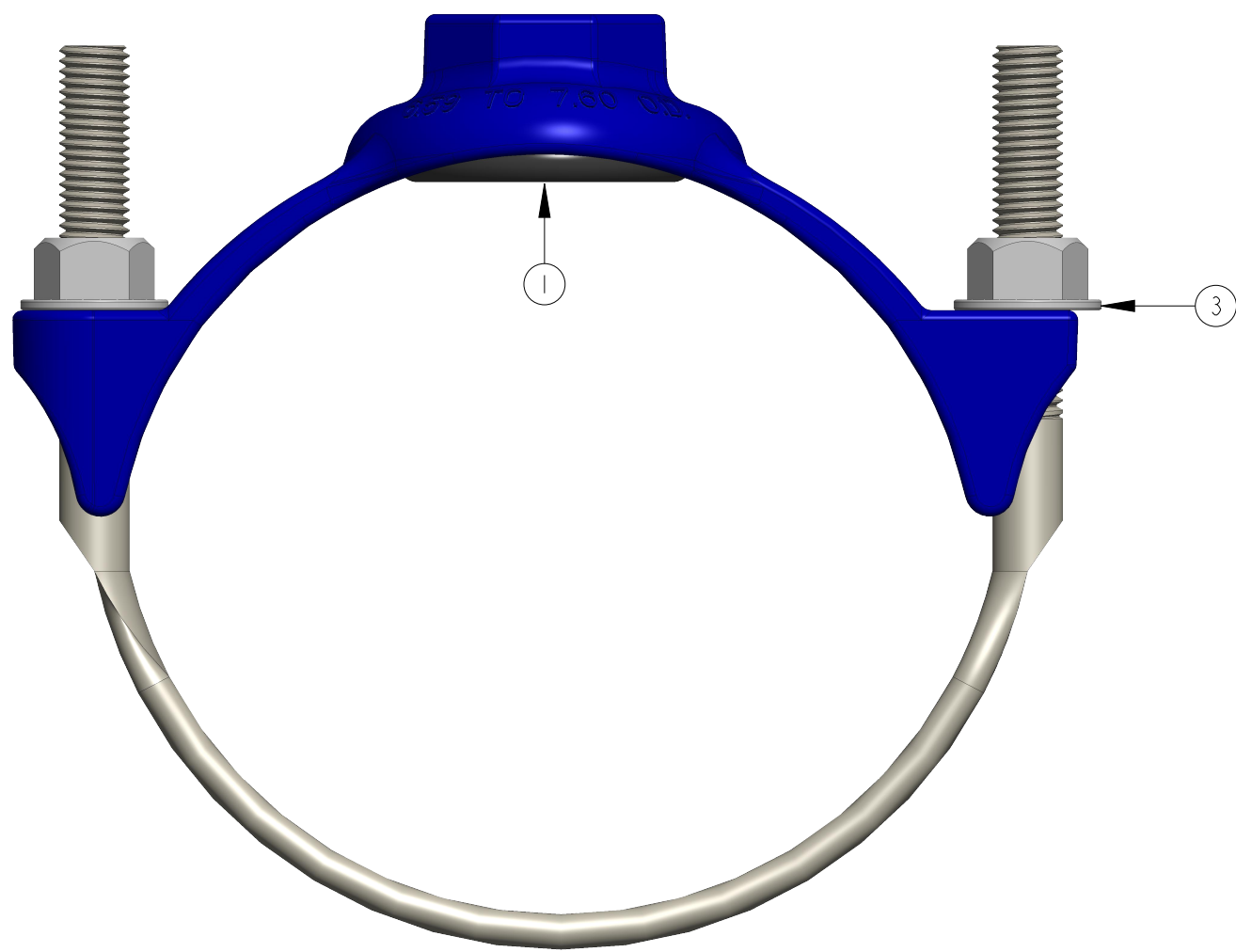
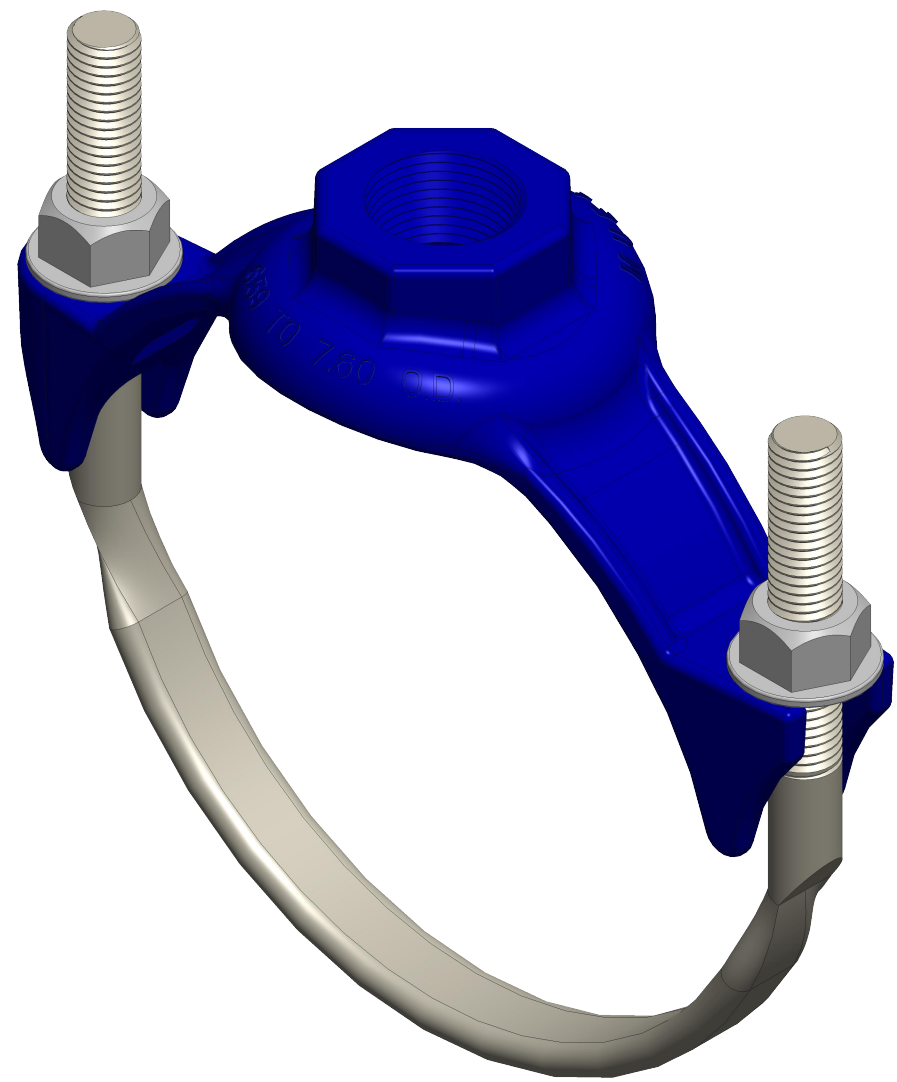


MUELLER CONFIDENTIAL
 TITLE TO AND OWNERSHIP OF THIS ENGINEERING DATA REMAINS IN MUELLER CO. NO USE IS TO BE MADE OF THIS DATA EXCEPT AS SPECIFICALLY AUTHORIZED BY MUELLER CO. ASSENT ON THE PART OF RECIPIENTS TO THESE CONDITIONS IS PRESUMED.

PIPE O.D. RANGE		KIND AND SIZE OF PIPE			SINGLE ALLOY STEEL STRAP WITH AWWA I.P. THREAD (F.I.P.T.)						SINGLE ALLOY STEEL STRAP WITH AWWA TAPER THREAD (C.C.)							
INCH	MM	A-C	STD. STEEL IPS PVC	CAST IRON, DUCTILE IRON, PVC C900	BASE CATALOG NUMBER	SIZE OF TAPPING (ADD TO "BASE" TO COMPLETE CATALOG NUMBER)						BASE CATALOG NUMBER	SIZE OF TAPPING (ADD TO "BASE" TO COMPLETE CATALOG NUMBER)					
						1/2"	3/4"	1"	1-1/4"	1-1/2"	2"		1/2"	3/4"	1"	1-1/4"	1-1/2"	2"
2.35-2.50	59.7-63.5	**	2"	2"*	DR I A 0235 IP	050	075	100	-	-	-	DR I A 0235 CC	050	075	100	-	-	-
3.56-4.00	91.0-101.0		3-1/2"	3"	DR I A 0356 IP	050	075	100	-	-	-	DR I A 0356 CC	050	075	100	-	-	-
4.47-5.32	113.5-135.1		4"	4"	DR I A 0447 IP	050	075	100	125	150	200	DR I A 0447 CC	050	075	100	125	150	200
6.59-7.60	167.4-193.04		6"	6"	DR I A 0659 IP	050	075	100	-	-	-	DR I A 0659 CC	050	075	100	-	-	-
6.59-7.37	167.4-187.2		6"	6"	DR I A 0659 IP	-	-	-	125	150	200	DR I A 0659 CC	-	-	-	125	150	200
8.54-9.79	216.9-248.7		8"	8"	DR I A 0854 IP	050	075	100	125	150	200	DR I A 0854 CC	050	075	100	125	150	200
10.64-12.12	270.3-307.8		10"	10"	DR I A 1064 IP	050	075	100	-	-	-	DR I A 1064 CC	050	075	100	-	-	-
12.62-14.38	320.5-365.3		12"	12"	DR I A 1262 IP	050	075	100	-	-	-	DR I A 1262 CC	-	075	100	-	-	-

* IMPORTANT - CAREFULLY CHECK THE RANGE OF THE SADDLE WITH THE O.D. OF THE PIPE BEING USED.
 ** THE OUTSIDE DIAMETER OF A-C PIPE VARIES FROM MANUFACTURER TO MANUFACTURER. TO MAKE CERTAIN YOU SELECT THE PROPER CLAMP:
 1) DETERMINE THE O.D. OF THE PIPE AT THE POINT OF SADDLE INSTALLATION;
 2) FROM THE PIPE O.D. RANGE COLUMN OF THE ABOVE CHART, CHOOSE A SADDLE THAT HAS A PIPE O.D. RANGE THAT INCLUDES THE DETERMINED PIPE DIAMETER.



PARTS LIST				
ITEM	DESCRIPTION	MATERIAL	ASTM	TYPE
1	O - RING	RUBBER	D2000	***
2	SADDLE	DUCTILE IRON	A536	60-40-18
3	WASHER	ZINC PLATED STEEL	F844	
4	STRAP	ZINC PLATED STEEL	AISI 1008	
5	5/8" HEAVY HEX NUT	ZINC PLATED STEEL	A563	GRADE A

***MUELLER RUBBER CODE R91

DRIA SERIES DUCTILE IRON SERVICE SADDLES - SINGLE STRAP

ECO 3035639
 AOD 11/03/2021
 RELEASED

DR. BY	AOD	11/03/21	UNLESS OTHERWISE NOTED	THIRD ANGLE PROJECTION	C.B. NO.
CHKR			BREAK CAST CORNER(S)---		
ENGR			BREAK MACH CORNER(S)---	PURCH.	FINISH
MGR			TOLERANCES	REF. NO.	PATT. NO.
MFG			UNLESS OTHERWISE NOTED	SCALE	
TOOL			LINEAR	NONE	
FDRY			±	ANGULAR	STR. NO.
MAT'L: NOTED					
MUELLER		DESCR.	DRIA SERIES DUCTILE IRON SERVICE SADDLES - SINGLE STRAP		NUMBER
					DRIA