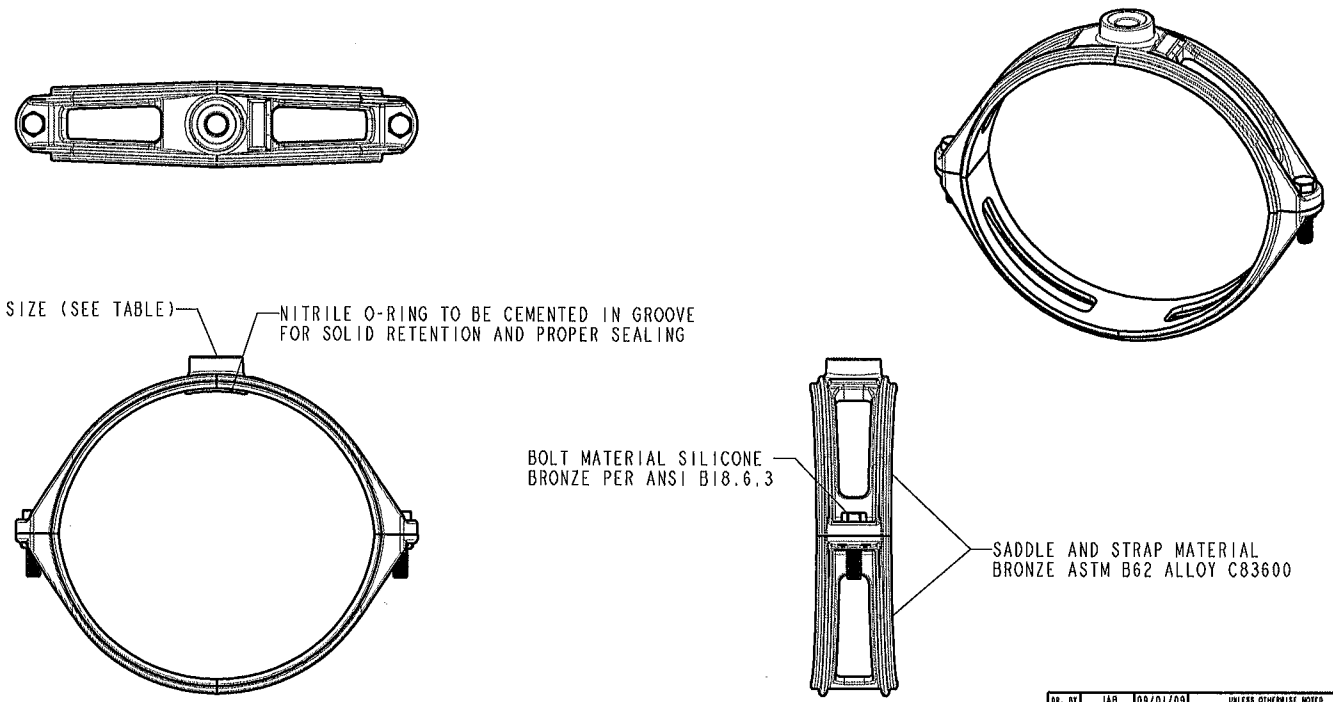


NOMINAL MAIN SIZE	AWWA C900 PVC PIPE								IPS O.D. CONTROLLED PVC PIPE							
	C.C. TAPPING SIZE CATALOGUE SERIES #				F.I.P.T. TAPPING SIZE CATALOGUE SERIES #				C.C. TAPPING SIZE CATALOGUE SERIES #				F.I.P.T. TAPPING SIZE CATALOGUE SERIES #			
	.75"	1"	1.5"	2"	.75"	1"	1.5"	2"	.75"	1"	1.5"	2"	.75"	1"	1.5"	2"
2"	---				---				H-13420				---			
2.5"	---				---				H-13422				---			
3"	---				---				H-13425				---			
4"	H-13440				H-13490				H-13428				H-13470			
6"	H-13441				H-13491				H-13431				H-13472			
8"	H-13442				H-13492				H-13433				H-13475			
10"	H-13443				H-13493				H-13434*				---			
12"	H-13444				H-13494				H-13435*				---			

* DENOTES A 3-PIECE DESIGN. IF NOT DESIGNATED, DESIGN IS 2-PIECE.
 --- DESIGNATES THAT SIZE/APPLICATION IS NOT AVAILABLE.

ALL ASSEMBLIES TO BE APPROVED FOR NSF-61



H-13443 SADDLE SHOWN ABOVE

DR. BY	JAB	09/01/09	UNLESS OTHERWISE NOTED	VIEWED ANGLE PROJECTION	C.S. NO.
CHKD	NAF	09/03/09	BREAK CAST CORNERS...		
ENGR	JWB	09/04/09	BREAK MACH CORNERS...		
MGR			TOLERANCES	REF. NO.	PATT. NO.
WFO			UNLESS OTHERWISE NOTED	SCALE	
TOOL			LINEAR	ANGULAR	1/3
FDBT			±	±	
MATERIAL: SEE PRINT					
Mueller Co.				DESCR:	NUMBER
				H-13000 SERIES SERVICE SADDLES FOR C900 AND IPS PVC PIPE SIZE	H13000

ECO 151509D
APPROVED
 By Graham Hines at 8:37 am, Sep 14, 2009