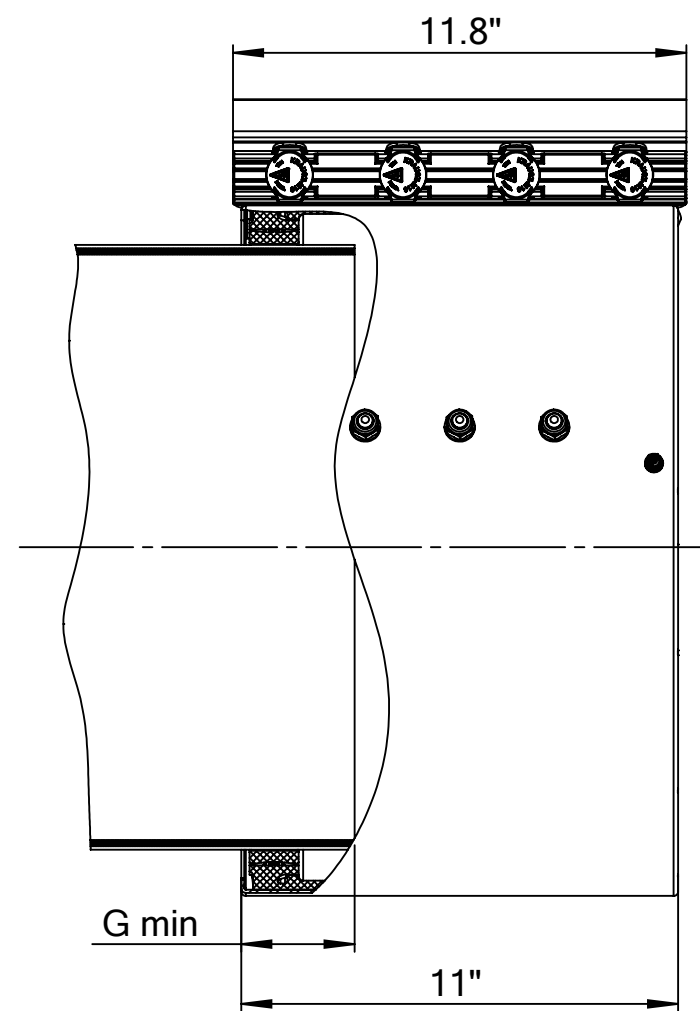
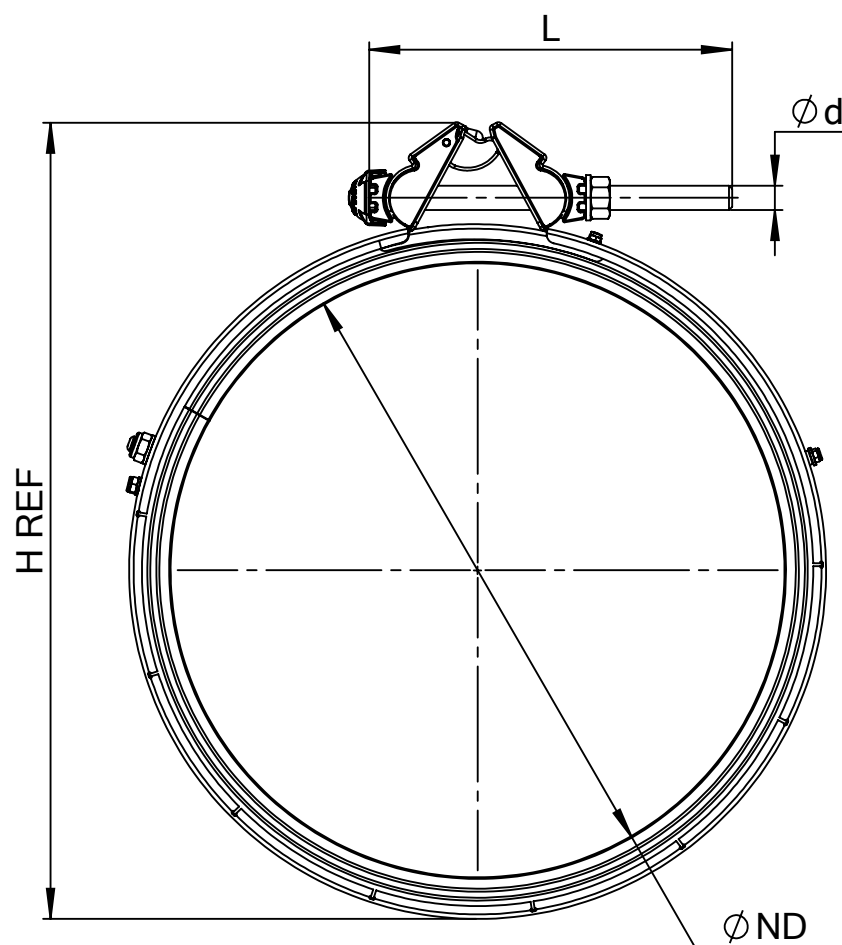
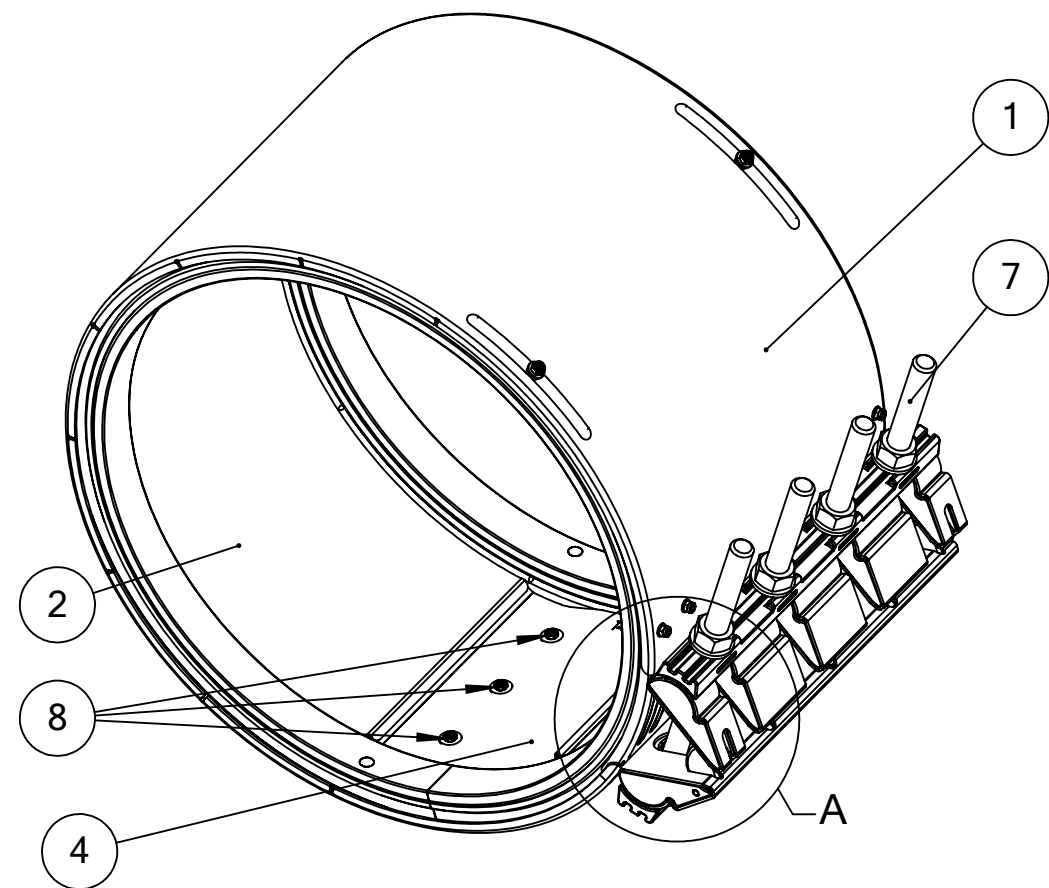
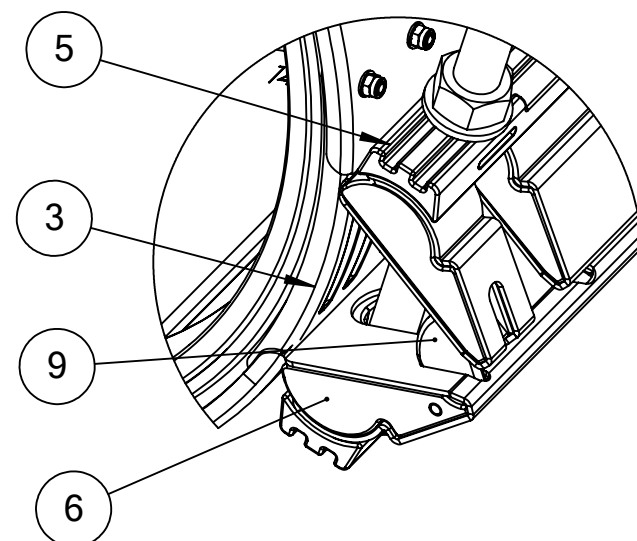


REVISIONS					
REV.	DESCRIPTION	ECO	DRAWN	APPROVED	DATE
M	Change Rated to Test Pressure	20000226	Galy B.	Tzah Gr.	09/03/2021



Material information

1. Body - Stainless Steel AISI 304 .
2. Pressure Assisted Gasket - EPDM compounded for water and sewerage in accordance with ASTM D2000
-Working Temperature:
For continuous operations : -20°F up to +180°F
For short time operations : up to 215°F
3. Gasket Bridge - AISI 304 stainless steel.
4. Inner plate - AISI 304 stainless steel .
5. Compression Beam - Casting AISI 304 (ASTM-A351-CF8).
6. Lugs - Polycarbonate.
7. Bolts & Nuts - AISI 304 stainless steel. Rolled thread and anti galling coating.
8. Bolts - Reinforced special bolts manufactured of Ultem* Resin 1000 with insert Socket Set Screw AISI 316.
9. Adjusting Pin - Casting AISI 304/304L (ASTM-A351-CF8)



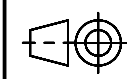
DETAIL A
SCALE 1 : 2.5

Weight: See table		Part Name: HYMAX VERSA (14"-24") 11" Length Pressure 175/160 PSI		Scale
Design	Date 21/07/2013	Name Evgeny K.	Catalog No. SD283-56-05	DO NOT SCALE DRAWING
Check	09/03/2021	Galy B.	Drawing No. SD283-56-05	
Appr.	09/03/2021	Tzah Gr.		Sheet 1 of 2

RELEASED



Confidential Information. All rights reserved to Krausz Industries Ltd. This document may not be copied, reproduced, displayed, modified or used in any way, whether in whole or in part, without the express prior written consent of Krausz Industries Ltd.



Size
A3


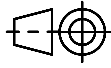
REVISIONS					
REV.	DESCRIPTION	ECO	DRAWN	APPROVED	DATE
M	Change Rated to Test Pressure	20000226	Galy B.	Tzah Gr.	09/03/2021

Krausz Part Number	ND (inch)	Overall Range(inch)	Before removal the inner layer (inch)	After removal the inner layer (inch)	Max stab on diameter before removal the inner layer (inch)	Max stab on diameter after removal the inner layer (inch)	H (inch)	Bolts Qty.-Size d (mm)	Bolts Length L (inch)	Torque (ft-lbs)	Body (Shell) Thickness (inch)	Approx Weight (Lbs)
283-56-0387-12	14"	15.22-16.48	15.22-15.85	15.84-16.48	15.66	16.48	20.7	4-M16	9.4	90	0.08	37.7
283-56-0398-12	14"	15.69-16.95	15.69-16.32	16.31-16.95	16.09	16.95	21.2	4-M16	9.4	90	0.08	38.4
283-56-0435-12	16"	17.11-18.37	17.11-17.74	17.73-18.37	17.65	18.37	22.6	4-M16	9.4	90	0.1	45
283-56-0440-12	16"	17.32-18.66	17.32-17.95	17.90-18.66	17.90	18.66	22.8	4-M16	9.4	110	0.1	45.4
283-56-0481-12	16"	18.93-20.20	18.93-19.56	19.55-20.20	19.45	20.20	24.4	4-M16	9.4	110	0.1	47.8
283-56-0493-12	18"	19.42-20.68	19.42-20.06	20.05-20.68	19.95	20.68	25.0	4-M16	9.4	110	0.1	48.7
283-56-0531-12	18"	20.90-22.16	20.90-21.53	21.52-22.16	21.45	22.16	25.6	4-M16	9.4	110	0.12	51.2
283-56-0562-12	20"	22.14-23.40	22.14-22.77	22.76-23.40	22.70	23.40	27.7	4-M16	9.4	150	0.12	58.7
283-56-0599-12	20"	23.60-24.86	23.60-24.24	24.22-24.86	24.15	24.86	29.1	4-M16	9.4	150	0.12	61.5
283-56-0634-11	24"	24.98-26.24	24.98-25.61	25.60-26.24	25.50	26.24	30.6	4-M16	9.4	150	0.12	64.1
283-56-0653-11	24"	25.72-26.98	25.72-26.37	26.35-26.98	26.25	26.98	31.3	4-M16	9.4	150	0.12	65.5
283-56-0688-11	24"	27.08-28.36	27.08-27.71	27.70-28.36	27.60	28.36	32.7	4-M16	9.4	150	0.12	67.9

Product performance

Dynamic deflection per side.	3°
Transition capability	up to 0.4"
G - Min. Pipe Insertion	3"
Maximum offset for misaligned pipe	up to 0.4"
Maximum out of roundness	0.31"
Working Pressure for 14"-20"	175 PSI
Working Pressure for 24"	160 PSI
Test Pressure for 14"-20"	263 PSI
Test Pressure for 24"	240 PSI
Vacuum Test	12 PSI
For long crack or hole: max. width of crack or hole	8"



Weight: See table		Part Name: HYMAX VERSA (14"-24") 11" Length Pressure 175/160 PSI		Scale
Design	Date 21/07/2013	Name Evgeny K.	Catalog No. SD283-56-05	DO NOT SCALE DRAWING
Check	09/03/2021	Galy B.		
Appr.	09/03/2021	Tzah Gr.		
Drawing No. SD283-56-05			Sheet 2 of 2	Size A3
 Confidential Information. All rights reserved to Krausz Industries Ltd. This document may not be copied, reproduced, displayed, modified or used in any way, whether in whole or in part, without the express prior written consent of Krausz Industries Ltd.				

RELEASED