

HYMAX[®]

a **MUELLER** brand

HYMAX[®] 2 FLANGE ADAPTOR (1.5" - 12")* & FLANGE ADAPTOR LONG BODY (1.5" - 12")

Product Specifications

FEATURES

- Advanced wide-range coupling with a patented flip gasket
- Eliminates gasket removal mistakes and maximizes installer work efficiency
- Using the game-changing HYMAX technology, proven in over 1M installations in the US
- Suitable for many pipe types. Check with your local salesperson for pipe material verification
- Patented hydraulically-assisted gasket with 2-stage sealing
- Lightweight construction enables fast and easy installation
- Allows 4° dynamic deflection per side, potentially reducing future damage

SPECIFICATIONS STANDARDS

- HYMAX flange adaptor and long body meets or exceeds requirements of standards: AWWA C-219, NSF 61, NSF 372.

SIZE

- Available in nominal diameter
- Flange adaptor 1.5" - 12"
- Flange adaptor long 1.5" - 12"

MATERIALS FLANGE BODY

- ASTM A53 Grade A steel.

* Registered Patent

FLANGE

F/A

- Meets ANSI B16.5, Class 150.

F/A LONG

- 1.5" - 2" Oval flange
- 3" Meets ANSI B16.5
- 4" - 12" Meets AWWA Class D

END RING

- ASTM A283/A283M Grade C steel.

SPHERICAL SPACERS

- Available in AISI 304 (ASTM A351 CF8) or AISI 316 (ASTM A351 CF8M) Stainless Steel.

BRIDGE

- Available in AISI 304 or AISI 316 Stainless Steel. ASTM A240.

GASKET

- EPDM Compounded for water and sewage in accordance to ASTM D2000, meets international standards for contact with drinking water.



JOIN



REPAIR



RESTRAIN



TAP

MUELLER

COATING

- 100% fusion bonded epoxy for enhanced corrosion protection.
- Average thickness 14 mm

BOLTS, NUTS & WASHERS

- Available in AISI 304 or AISI 316 Stainless Steel. Rolled thread and anti-galling coating. ASTM F593, ASTM F594 and ASTM A240 respectively.

PRODUCT PERFORMANCE (*)

WORKING TEMPERATURE

- EPDM: -20° F up to +125° F

DYNAMIC DEFLECTION

- Up to 4°

MIN. PIPE INSERTION

- 2.25"

MAXIMUM OFFSET FOR MISALIGNED PIPES

F/A

- ND 1.5" - 3": 0.20"
- ND 4" - 12": 0.24"

F/A LONG

- ND 2" - 3" : 0.20"
- ND 4" - 12": 0.24"

MAXIMUM OUT OF ROUNDNESS

F/A

- ND 1.5: 0.08"
- ND 2" - 3": 0.20"
- ND 4" - 12": 0.31"

F/A LONG

- ND 1.5: 0.08"
- ND 2" - 3": 0.20"
- ND 4" - 12": 0.31"

WORKING PRESSURE

- 175 psi

RATED PRESSURE

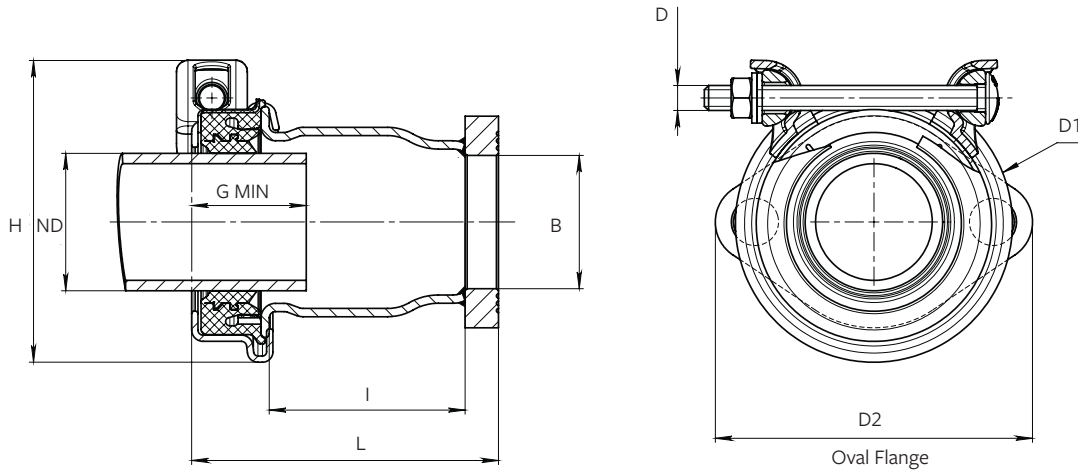
- 262 psi

VACUUM TEST

- 12 psi

PRODUCT TABLES

HYMAX 2 OVAL FLANGE AWWA D 1.5" - 2"



When XX = 54 - Fasteners are AISI 304

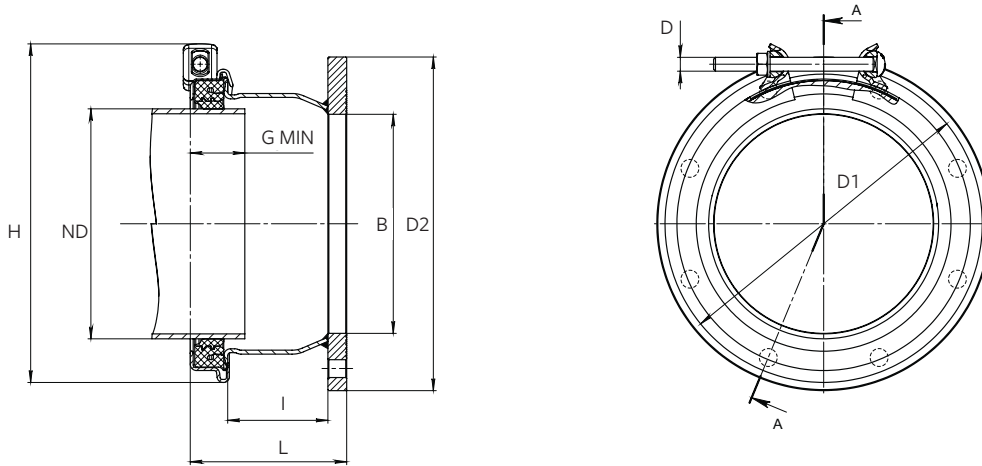
When XX = 94 - Fasteners are SS316

HYMAX 2 OVAL FLANGE AWWA D 1.5" - 2"

HYMAX Part Number	Nominal Diameter (mm)	Flange (inch)	Overall Range (inch)	Range In Closed Gasket Position (inch)	Range In Open Gasket Position (inch)	D1 (inch)	H (inch)	I (inch)	L (inch)	D2 (inch)	B (inch)	Bolt Qty. and Size	Approx. Torque	Approx. Weight (lbs)
874-XX-01004112	1.5	1.5	1.61 - 2.13	1.61 - 1.97	1.96 - 2.13	Ø3.9	5.0	4.1	5.8	5.4	Ø1.95	1 - M12	35	7
874-XX-02005412	2	2	2.10 - 3.03	2.10 - 2.60	2.56 - 3.03	Ø5.2	5.7	3.7	5.7	6.0	Ø2.44	1 - M12	50	8

PRODUCT TABLES

HYMAX 2 FLANGE ADAPTOR



When XX = 54 - Fasteners are AISI 304

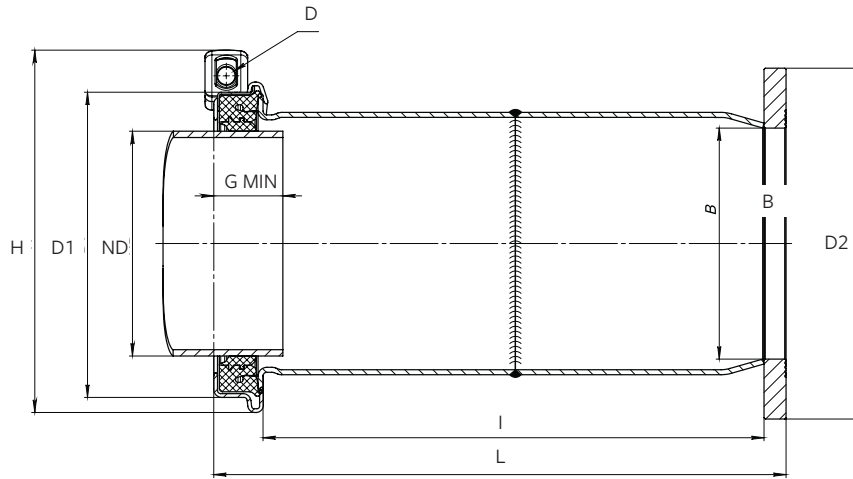
When XX = 94 - Fasteners are SS316

HYMAX 2 FLANGE ADAPTOR

HYMAX Part Number	Nominal Diameter (mm)	Flange (inch)	Overall Range (inch)	Range In Open Gasket Position (inch)	Range In Closed Gasket Position (inch)	D1 (inch)	H (inch)	I (inch)	L (inch)	D2 (inch)	B (inch)	Bolt Qty. and Size	Approx. Torque (lbs)	Approx. Weight (lbs)
874-XX-03008812	3	3	3.46 - 4.33	3.46 - 3.90	3.86 - 4.33	Ø6.7	7.1	2.9	4.8	Ø7.5	Ø4.02	1 - M12	50	12
874-XX-04010812	4	4	4.25 - 5.63	4.25 - 5.00	4.92 - 5.63	Ø8.7	9.3	2.9	5.1	Ø9.0	Ø5.24	1 - M14	75	14
874-XX-04016312	6	4	6.42 - 7.68	6.42 - 7.05	7.01 - 7.68	Ø10.8	11.3	8.9	11.2	Ø9.0	Ø4.57	1 - M14	75	27
874-XX-05013012	5	5	5.12 - 6.38	5.12 - 5.75	5.71 - 6.38	Ø9.5	10.0	4.0	6.2	Ø10.0	Ø6.14	1 - M14	75	21
874-XX-06010812	4	6	4.25 - 5.63	4.25 - 5.00	4.92 - 5.63	Ø8.7	9.3	2.3	4.6	Ø11.0	Ø7.24	1 - M14	75	20
874-XX-06013012	5	6	5.12 - 6.38	5.12 - 5.75	5.71 - 6.38	Ø9.5	10.0	4.0	6.2	Ø11.0	Ø7.24	1 - M14	75	22
874-XX-06016312	6	6	6.42 - 7.68	6.42 - 7.05	7.01 - 7.68	Ø10.8	11.3	4.0	6.2	Ø11.0	Ø7.24	1 - M14	75	23
874-XX-06021712	8	6	8.54 - 9.84	8.54 - 9.17	9.13 - 9.84	Ø12.9	13.1	4.0	6.2	Ø11.0	Ø7.24	1 - M14	75	36
874-XX-08019012	7	8	7.48 - 8.74	7.48 - 8.11	8.07 - 8.74	Ø11.7	12.2	4.0	6.2	Ø13.5	Ø9.41	1 - M14	75	31
874-XX-08021712	8	8	8.54 - 9.84	8.54 - 9.17	9.13 - 9.84	Ø12.9	13.1	4.0	6.2	Ø13.5	Ø9.41	1 - M14	75	32
874-XX-08027812	10	8	10.96 - 12.26	10.96 - 11.63	11.59 - 12.26	Ø15.3	15.8	9.9	12.2	Ø13.5	Ø9.41	1 - M14	75	46
874-XX-08031512	12	8	12.40 - 13.66	12.40 - 13.03	12.99 - 13.66	Ø16.6	17.5	11.9	14.2	Ø13.5	Ø9.41	1 - M14	75	56
874-XX-08033412	12	8	13.15 - 14.41	13.15 - 13.78	13.74 - 14.41	Ø17.3	18.1	11.9	14.2	Ø13.5	Ø9.41	1 - M14	75	55
874-XX-10027212	10	10	10.70 - 12.00	10.70 - 11.37	11.33 - 12.00	Ø15.0	15.6	4.0	6.2	Ø16.0	Ø11.61	1 - M14	75	38
874-XX-10027812	10	10	10.96 - 12.26	10.96 - 11.63	11.59 - 12.26	Ø15.3	15.8	4.0	6.2	Ø16.0	Ø11.61	1 - M14	75	41
874-XX-12031512	12	12	12.40 - 13.66	12.40 - 13.03	12.99 - 13.66	Ø16.6	17.5	4.0	6.2	Ø19.0	Ø14.02	1 - M14	80	52
874-XX-12033412	12	12	13.15 - 14.41	13.15 - 13.78	13.74 - 14.41	Ø17.3	18.1	4.0	6.2	Ø19.0	Ø14.02	1 - M14	80	57
874-XX-14033412	12	14	13.15 - 14.41	13.15 - 13.78	13.74 - 14.41	Ø17.3	18.1	8.2	10.7	Ø21.0	Ø15.43	1 - M14	80	71

PRODUCT TABLES

HYMAX 2 FLANGE ADAPTOR LONG BODY SIZES 1.5" - 12"



HYMAX 2 FLANGE ADAPTOR LONG BODY SIZES 1.5" - 12"

HYMAX Part Number	Nominal Diameter (inch)	Flange (inch)	Overall Range (inch)	Range in Closed Gasket Position (inch)	Range in Open Gasket Position (inch)	Bolt Qty. and Size (mm)	Approx. Weight (lbs)	Torque	Length (inch)
974-54-01004112	1.5	1.5	1.61 - 2.13	1.61 - 1.97	1.96 - 2.13	1 - M12	9	35	9.2
974-54-02005412	2	2	2.10 - 3.03	2.10 - 2.60	2.56 - 3.03	1 - M12	10	50	9.5
974-54-03008812	3	3	3.46 - 4.33	3.46 - 3.90	3.86 - 4.33	1 - M12	16	50	13.4
974-54-04010812	4	4	4.25 - 5.63	4.25 - 5.00	4.92 - 5.63	1 - M14	23	75	13.6
974-54-05013012	5	5	5.12 - 6.38	5.12 - 5.75	5.71 - 6.38	1 - M14	30	75	18
974-54-06013012	5	6	5.12 - 6.38	5.12 - 5.75	5.71 - 6.38	1 - M14	33	75	18
974-54-06016312	6	6	6.42 - 7.68	6.42 - 7.05	7.01 - 7.68	1 - M14	36	75	18
974-54-08019012	7	8	7.48 - 8.74	7.48 - 8.11	8.07 - 8.74	1 - M14	42	75	18
974-54-08021712	8	8	8.54 - 9.84	8.54 - 9.17	9.13 - 9.84	1 - M14	49	75	18
974-54-10027212	10	10	10.70 - 12.00	10.70 - 11.37	11.33 - 12.00	1 - M14	56	75	18
974-54-12031512	10	10	10.96 - 12.26	10.96 - 11.63	11.59 - 12.26	1 - M14	60	75	18
974-54-12031512	12	12	12.40 - 13.66	12.40 - 13.03	12.99 - 13.66	1 - M14	61	80	18
974-54-12033412	12	12	13.15 - 14.41	13.15 - 13.78	13.74 - 14.41	1 - M14	63	80	18

To learn more, visit [HymaxUSA.com](https://www.hymaxusa.com).

Mueller refers to one or more of Mueller Water Products, Inc., a Delaware corporation ("MWP"), and its subsidiaries. MWP and each of its subsidiaries are legally separate and independent entities when providing products and services. MWP does not provide products or services to third parties. MWP and each of its subsidiaries are liable only for their own acts and omissions and not those of each other. MWP brands include Mueller®, Echologics®, Hydro Gate®, Hydro-Guard®, HYMAX®, Krausz®, Jones®, Mi.Net®, Milliken®, Pratt®, Pratt Industrial®, Sentryx™, Singer®, and U.S. Pipe Valve & Hydrant. Please see muellerwp.com/brands to learn more.

© 2023 Mueller Co., LLC. All Rights Reserved. The trademarks, logos and service marks displayed in this document are the property of Mueller Co., LLC, its affiliates or other third parties. Products above marked with a section symbol (§) are subject to patents or patent applications. For details, visit www.mwppat.com. These products are intended for use in potable water applications. Please contact your HYMAX Sales or Customer Service Representative concerning any other application(s).

F 14533 PS0052 06/23

