

# HYMAX<sup>®</sup>

a **MUELLER** brand

## DISMANTLING JOINT (1.5" - 24")

### Product Specifications

#### FEATURES

- Connects valves, pumps, meters and pipe assemblies
- Patented hydraulically-assisted gasket with 2-stage sealing
- Adjusts to various lengths per nominal size
- Fast, easy maintenance - up to 60% fewer bolts
- Easy opening and closing via radial closure

#### SPECIFICATIONS STANDARDS

- Dismantling joint meets or exceeds standards AWWA C219, NSF 61, NSF 372.

#### SIZE

- Available in nominal diameter from 1.5" - 24".

#### MATERIALS

##### END RINGS

- 1.5" - 24" ASTM A283/A283M Grade C steel.

##### CENTER RING

- 1.5" - 16" ASTM A53 Grade A steel.
- 18" - 24" ASTM A283/A283M Grade C steel.



##### GASKETS

- EPDM compounded for water and sewerage in accordance with ASTM D2000, meets international standards for contact with drinking water.

##### BRIDGE

- AISI 304 stainless steel. ASTM A240.

##### FLANGE

- 1.5 - 2" Oval flange.
- 3" Meets ANSI B16.5.
- 4" - 24" Meets AWWA Class D.

##### SPHERICAL SPACERS

- AISI 304 stainless steel. ASTM A351 CF8.

##### COATING

- 100% fusion bonded epoxy for enhanced corrosion protection.
- Average thickness 14 mm.

##### BOLTS, NUTS AND WASHERS

- AISI 304 stainless steel. Rolled thread and anti galling coating. ASTM F593, ASTM F594, ASTM A240 respectively.



JOIN



REPAIR



RESTRAIN



TAP

**MUELLER**

# PRODUCT PERFORMANCE (\*)

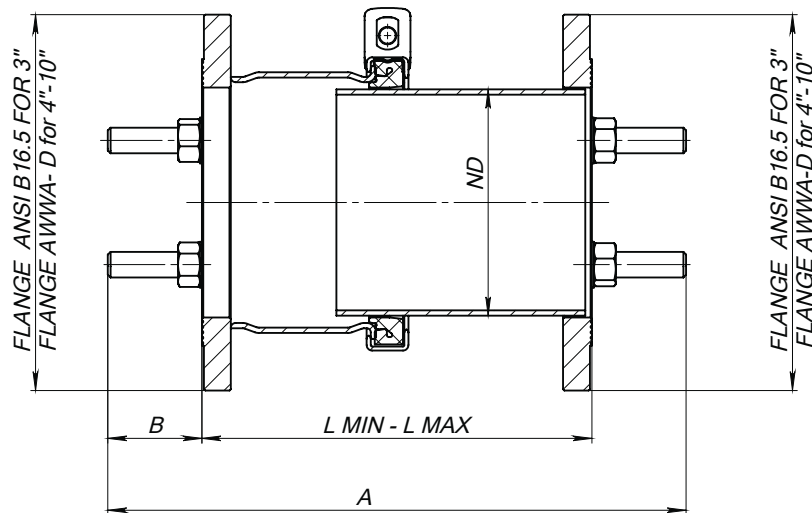
## WORKING TEMPERATURE

- 20° F up to +125° F

## WORKING PRESSURE

- ND 1.5" - ND 10": 175 PSI
- ND 12" - ND 24": 150 PSI

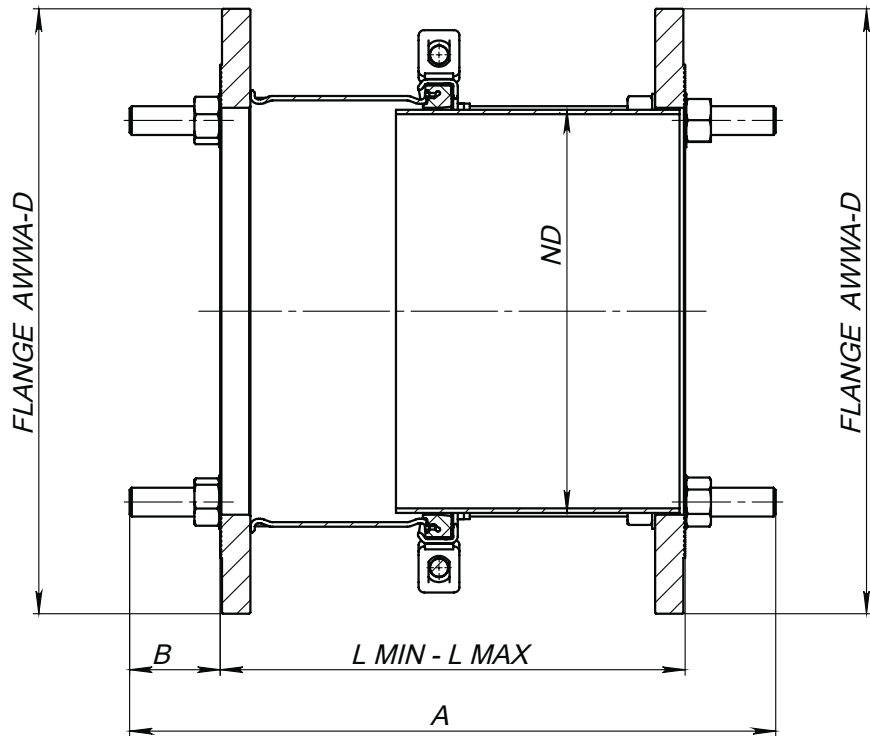
## PRODUCT TABLES



### DISMANTLING JOINT NOMINAL SIZES 1.5" - 10"

HYMAX Part Number	Nominal Diameter (mm)	Min. Length (inch)	Max. Length (inch)	Threaded Rods (inch)	No. Rods (pcs)	Torque (ft-lbs)	Working Pressure (psi)	Test Pressure (psi)	Approx. Weight (lbs)
811-56-0015-12	1.5	8.27	11.42	5/8	2	35	175	262	12
811-56-0002-12	2	8.27	11.42	5/8	2	35	175	262	13
*811-56-0003-12	3	8.27	11.42	5/8	2	35	175	262	25
811-56-0004-12	4	8.27	11.42	5/8	2	35	175	262	34
811-56-0006-12	6	8.27	11.42	3/4	4	50	175	262	51
811-56-0008-12	8	11.02	16.14	3/4	4	65	175	262	65
811-56-0010-12	10	11.02	16.14	7/8	4	65	175	262	95

\* All products come with straight rod except 3" Dismantling Joint.



### DISMANTLING JOINT NOMINAL SIZES 12" - 24"

HYMAX Part Number	Nominal Diameter (mm)	Min. Length (inch)	Max. Length (inch)	Threaded Rods (inch)	No. Rods (pcs)	Torque (ft-lbs)	Working Pressure (psi)	Test Pressure (psi)	Approx. Weight (lbs)
811-56-0012-12	12	11.02	16.14	7/8	4	65	175	262	180
811-56-0014-12	14	11.02	16.14	1	4	80	150	225	200
811-56-0016-12	16	13.78	18.90	1	4	80	150	225	230
811-56-0018-12	18	13.78	18.90	1 1/8	4	80	150	225	251
811-56-0020-12	20	13.78	18.90	1 1/8	4	80	150	225	340
811-56-0024-12	24	13.78	18.90	1 1/4	4	100	150	225	360

**To learn more, visit [HymaxUSA.com](https://www.hymaxusa.com).**

Mueller refers to one or more of Mueller Water Products, Inc., a Delaware corporation ("MWP"), and its subsidiaries. MWP and each of its subsidiaries are legally separate and independent entities when providing products and services. MWP does not provide products or services to third parties. MWP and each of its subsidiaries are liable only for their own acts and omissions and not those of each other. MWP brands include Mueller®, Echologics®, Hydro Gate®, Hydro-Guard®, HYMAX®, HYMAX®, izO®, Jones®, Mi.Net®, Milliken®, Pratt®, Pratt Industrial®, Sentryx™, Singer®, and U.S. Pipe Valve & Hydrant. Please see [muellerwp.com/brands](https://muellerwp.com/brands) to learn more.

© 2022 Mueller Co., LLC. All Rights Reserved. The trademarks, logos and service marks displayed in this document are the property of Mueller Co., LLC., its affiliates or other third parties. Products above marked with a section symbol (§) are subject to patents or patent applications. For details, visit [www.mwppat.com](https://www.mwppat.com). These products are intended for use in potable water applications. Please contact your Mueller Sales or Customer Service Representative concerning any other application(s).

F 14555 PS0009 05/23

